



VOLUNTEER TRANSPORTER

WILDLIFE RESCUE

Learn how you can help sick, injured, and underage wild animals in need by volunteering as a Wildlife Rescue Transporter

RECEIVE EMAIL OR TEXT ALERTS

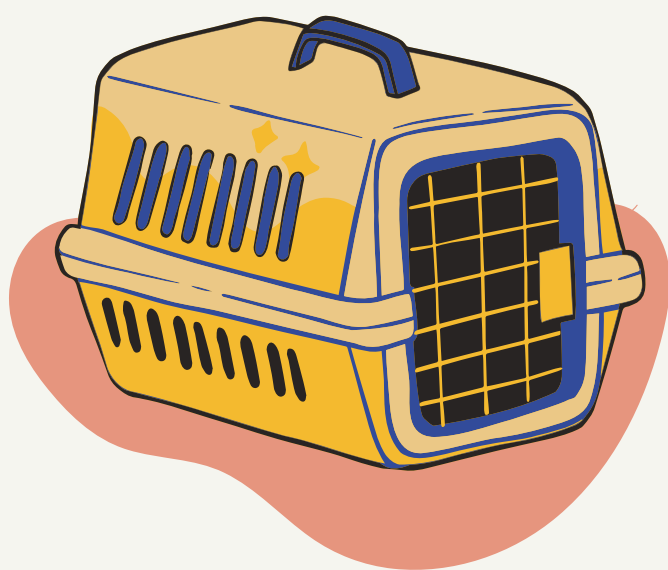
When you register as a volunteer transporter, you sign up to receive email and text alerts when an animal needs transport. We will only message you during the hours you indicate you're available for.

If you're available to transport, you will call or text the Wildlife Hotline to take on the transport.



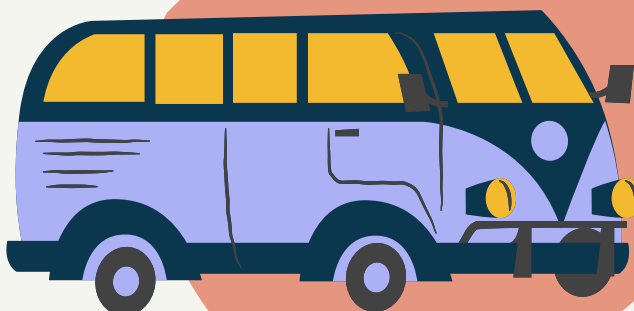
PICK UP THE ANIMAL

You will pick up the animal at our Palo Alto shelter at 3281 E Bayshore Rd. The animal will be safely contained in a carrier. You will also receive a permit for transporting wildlife.



DRIVE TO THE WILDLIFE CENTER

You will take the animal to the wildlife center is at Peninsula Humane Society at 1450 Rollins Rd in Burlingame.



WILDLIFE REHAB

The wildlife center cares for and rehabilitates animals to be re-released.

In 2022, Pets In Need took in and transported 230 animals to the wildlife center for rehabilitation.

GET COMMUNITY SERVICE HOURS

If you're looking to get community service hours, you can use each transport for one 1 hour of service.



JOIN THE WILDLIFE TRANSPORTER TEAM AT
WWW.PETSINNEED.ORG/VOLUNTEER